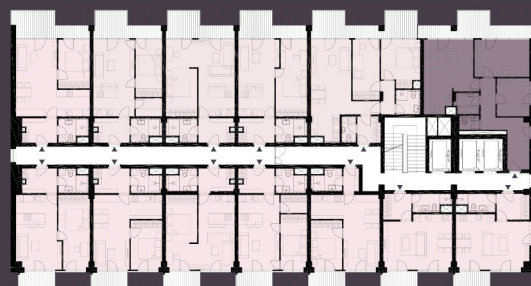
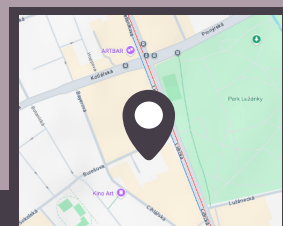
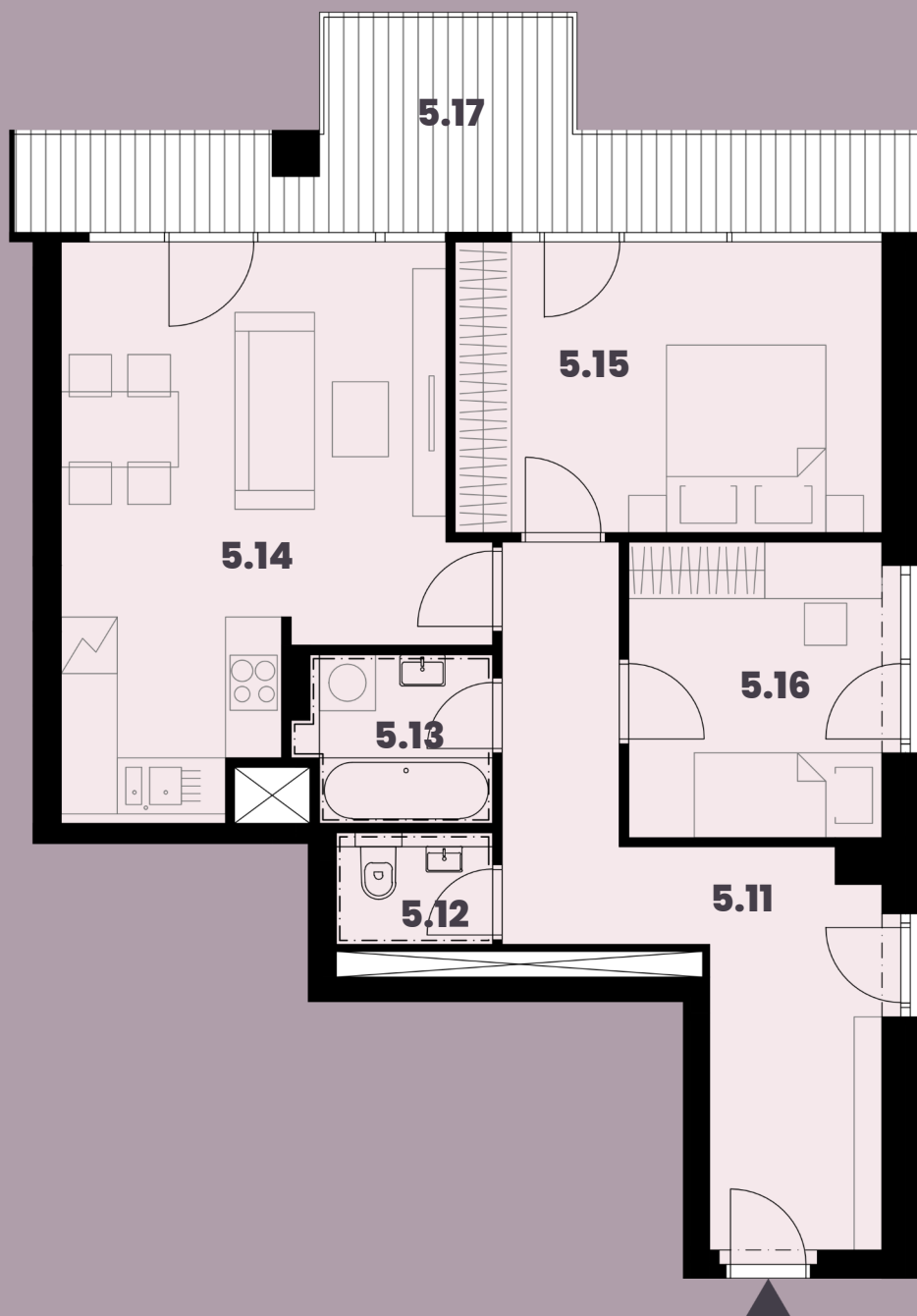


Celková plocha: 80,75 m²

5.11 Předsíň	14,07m ²
5.12 WC	1,98m ²
5.13 Koupelna	3,52m ²
5.14 Obytná místnost s KK	22,15m ²
5.15 Ložnice	14,10m ²
5.16 Pokoj	8,50m ²
5.17 Balkon	13,85m ²



K bytu lze dokoupit parkovací stání a sklep.



Burešova 17, Brno