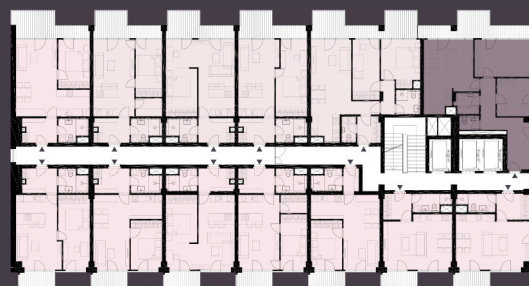
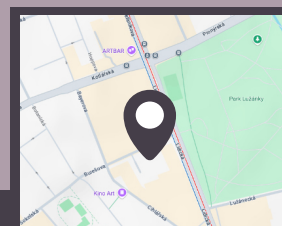
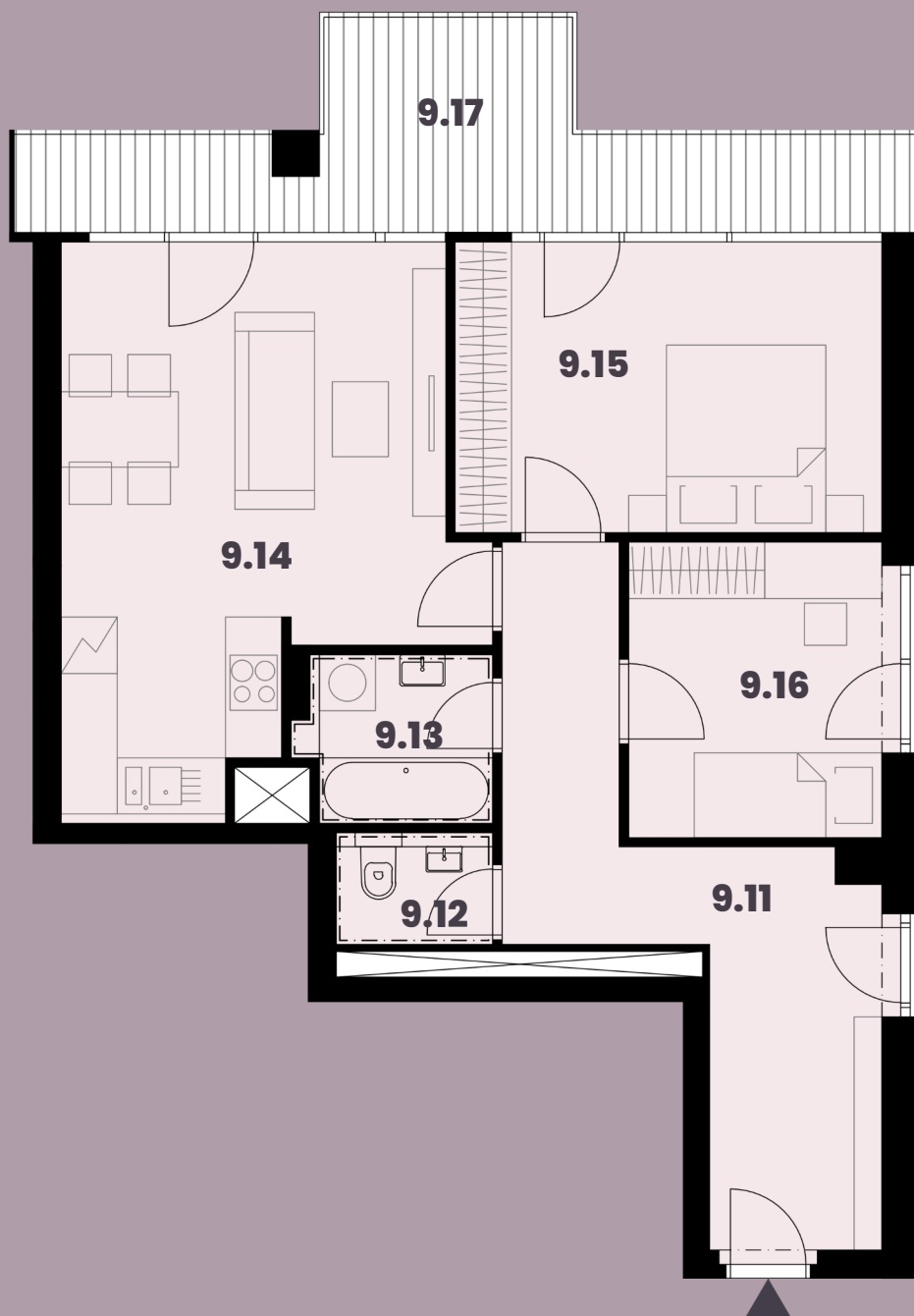


**Celková plocha: 80,75 m<sup>2</sup>**

9.11 Předsíň	14,07m <sup>2</sup>
9.12 WC	1,98m <sup>2</sup>
9.13 Koupelna	3,52m <sup>2</sup>
9.14 Obytná místnost s KK	22,15m <sup>2</sup>
9.15 Ložnice	14,10m <sup>2</sup>
9.16 Pokoj	8,50m <sup>2</sup>
9.17 Balkon	13,85m <sup>2</sup>



**K bytu lze dokoupit parkovací stání a sklep.**



**Burešova 17, Brno**

**Rezidence**  
BUREŠOVA

**+420 731 526 384**

[www.rezidenceburesova.cz](http://www.rezidenceburesova.cz)