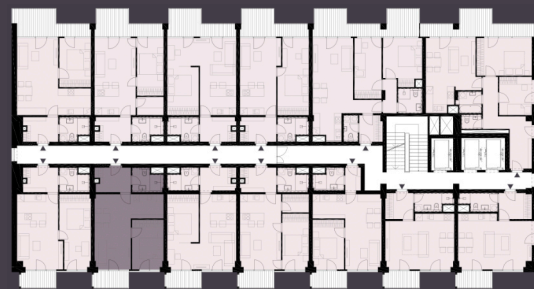
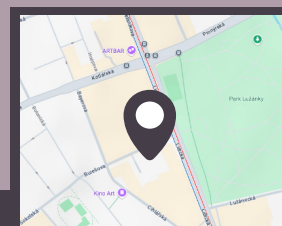
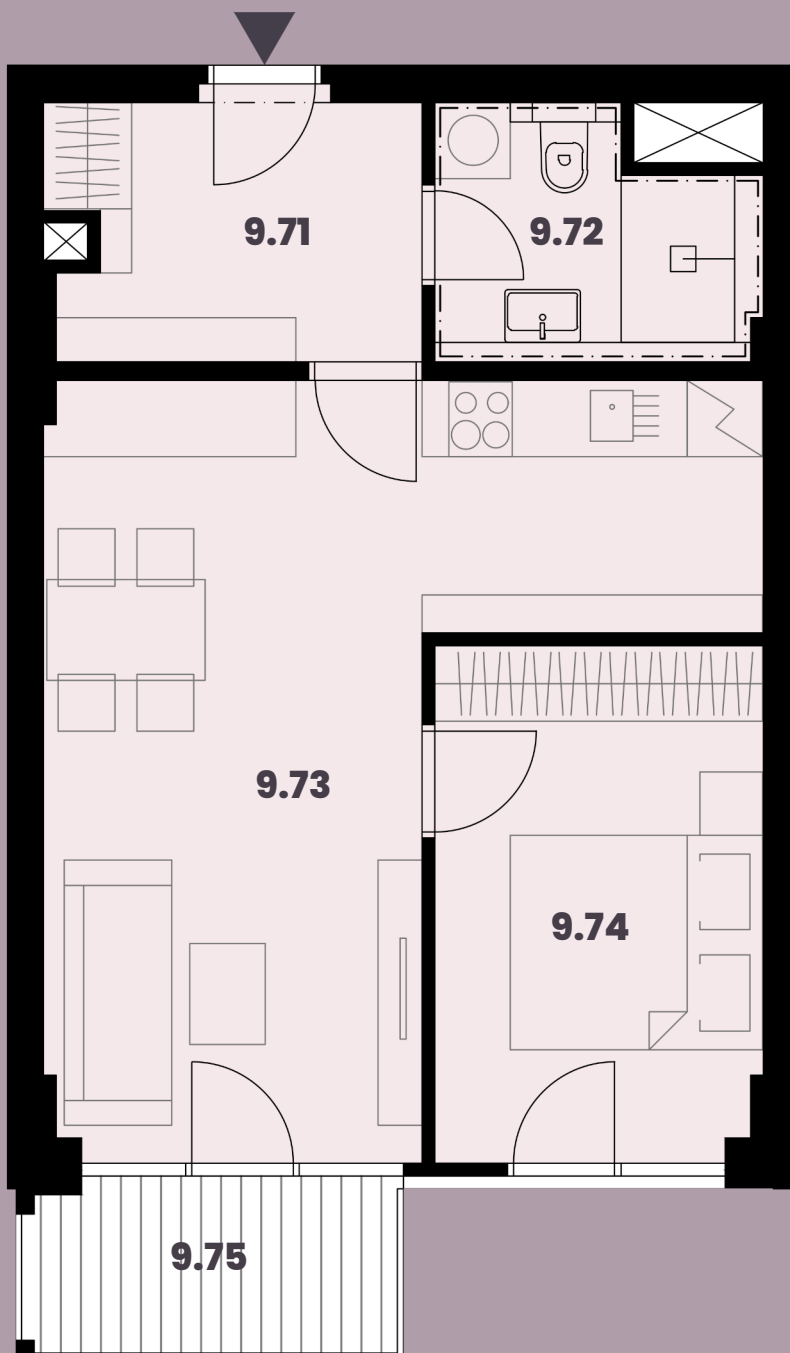


**Celková plocha: 50,11 m<sup>2</sup>**

|                           |                     |
|---------------------------|---------------------|
| 9.71 Předstíň             | 5,85m <sup>2</sup>  |
| 9.72 Koupelna + WC        | 4,65m <sup>2</sup>  |
| 9.73 Obytná místnost s KK | 23,31m <sup>2</sup> |
| 9.74 Ložnice              | 10,09m <sup>2</sup> |
| 9.75 Balkon               | 4,14m <sup>2</sup>  |



K bytu lze dokoupit parkovací stání a sklep.



Burešova 17, Brno

**Rezidence**  
BUREŠOVA

**+420 731 526 384**

[www.rezidenceburesova.cz](http://www.rezidenceburesova.cz)